

Huangshan Yafei Electronics Co., Ltd.

ADD: East Fengle Ind Park, Shexian, Huangshan, Anhui245200, China.

Contact way:

Tel: +86-559-6514208

Fax: +86-559-6519837

Email: yafeihs@163.com or yafei@globalsources.com

MSN: tedyu128@hotmail.com Skype:tedyu128

<http://www.yafeielec.com>



雅飞电子有限公司
YAFEI ELECTRONICS CO., LTD.

your total cabling specialist in g. china

您的布线系统专家



COMPANY PROFILE

Founded in 1997, Yafei Electronics Co., Ltd.. has been a leading manufacturer of cable & wire and other electronic products. For more than ten years, we supply products for information, communications and electronics industries around the world. In the area of electronics and communications, we have established a huge customer base and partnerships with many well-known companies from Europe, America, Australia, Japan, and South-East Asia.

All products from YAFEIELEC are designed by most advanced AI philosophy, cutting-edge technology, and excellent sense of artistry; through professional experiments and accurate testing, we guarantee that every product made by us come with the most satisfactory quality. With professional enthusiasm, we provide complete customer services, strong R&D capabilities, and excellent product quality control. All of the advantages contribute to establishing a more-important-than-ever position for YAFEIELEC in the global market. Leading the world into the new era of digital economy, we use our unique professional skills intergraded with customized services to provide brand new technology-based product solutions. By connecting the future, we create the win-win strategy for each of our customers.



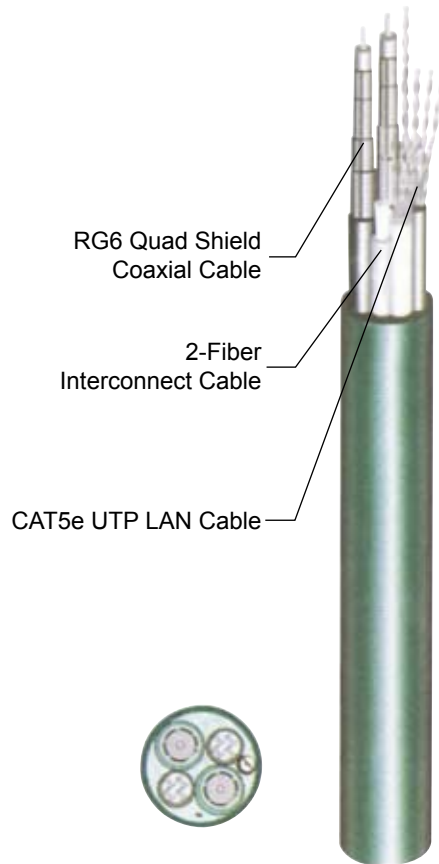
Contents:

1. Home networking (HYBRID) Cable	P1
2. Teflon insulated lan cable(CMP)	P3
3. CCTV (CMP) Cable	P4
4. Telephone cable	P5
5. Lan (round and flat) cable	P6
6. Network Patch cord	P12
7. Coaxial cable	P13
8. LMR/Trunk/D-FB coaxial cable	P15
9. Patch cord(Connected cable)	P19
10. Speak cable	P22
11. Alarm cable	P23
12. USB cable	P24
13. HDMI cable	P25

HOME NETWORKING CABLE

Product Description

- Reference standard: TLA/ELA 570A
- Two RG6 quad shield coaxial cables complies to SCTE ISP -IP - 001. 18 AWG solid bare copper clad steel conductors. Al foil/60%Al braid shield + Al foil/40%Al braid shield
- Two 4 pair CAT 5e UTP cable complies to TIA/ELA 568B. 24AWG solid bare copper conductor/ PE insulation
- One 2 - fiber interconnect cable, multi - mode fiber 62.5/ 125μm



Application

Multi-media Connection for Smart Home

Sub-unit Identification

Product Type	Jacket Colour
CAT5e	White
CAT5e	Grey
RG6	White
RG6	Black
Fiber	Orange

Cat 5e pair Identification

Pair No.	Pair Colour
Pair 1	Blue White
Pair 2	Orange White
Pair 3	Green White
Pair 4	Brown White

Sub-unit Identification

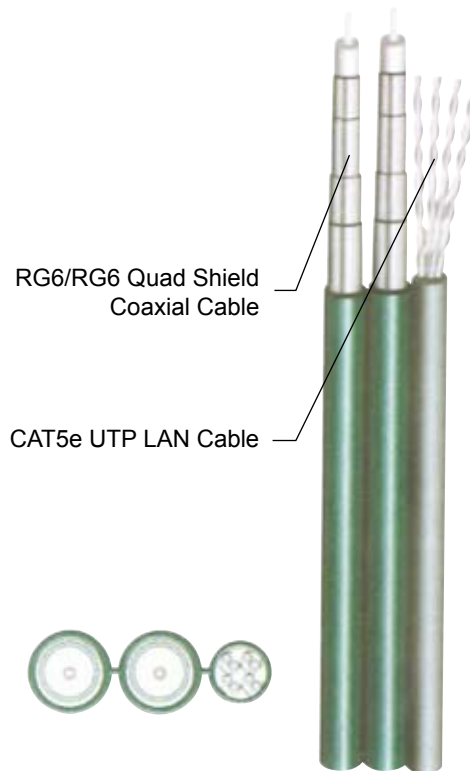
Cable Construction	Nominal Cable OD mm	Nominal CAT5e OD mm	Nominal QS6 OD mm	Nominal Fiber OD mm	Jacket Colour
2xQS RG6+2xCAT5e	18.0	5.1	7.3	-	Blue
2xQS RG6+2xCAT5e+OF	19.0	8.1	7.3	4.8	Blue

CAT 5e+RG6 HYBRID CABLE

(With one of two RG6 QS Coaxial Cables)

Product Description

- RG6 coaxial cable
Complies to SCTE ISP-IP-001
18AWG solid bare copper conductor
Al foil(34AWG Al braid shield)
- 4 pair CAT5 or CAT5e UTP cables
Complies to TIA/EA 568A/B 24 AWG solid bare copper conductors/PE insulation
- PVC jacket



Application

For use in Home Networking systems.

Cable Construction	Nominal Cable OD mm	Nominal CAT5e OD mm	Nominal QS6 OD mm
RG6+CAT5e	12.6	5.1	6.9
QS RG6+CAT5e	13.0	5.1	7.3
2xRG6+CAT5e	20.1	5.1	6.9
2xQS RG6+CAT5e	20.9	5.1	7.3

TEFLON® INSULATED LAN CABLE

Product Description

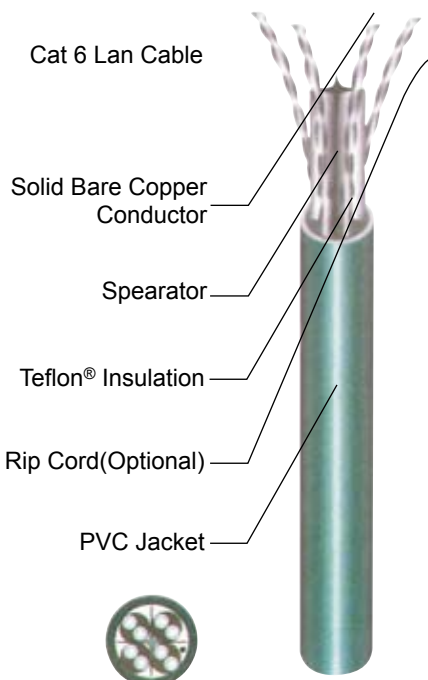
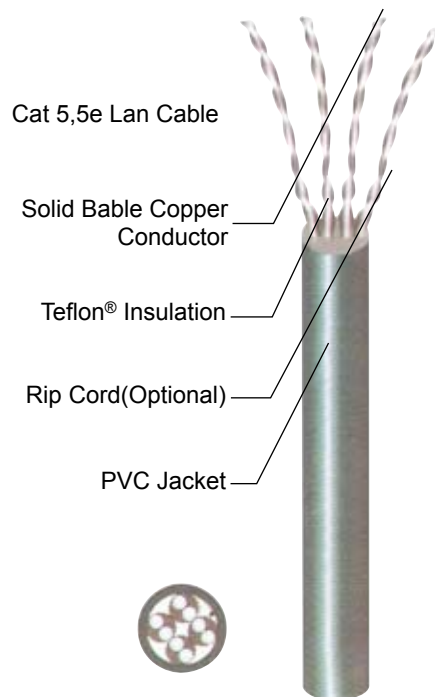
- Rated temperature:75°C
- Rip cord(Optional)
- Insulation
- PVC Jacket
- Reelex Pull -out Box Packing available
- Desinged with reference to CMP grade of UL standard

Application

- | | |
|---------------|-------------------------------|
| Cat 5 | Cat 5 |
| -10 Base-T | -10 Base-T4 |
| -100Base-T4 | -100Base-TX |
| -100Base-TX | -100VG-Anylan |
| -100VG-Anylan | -1000Base-T(Gigabit Ethernet) |
| -155Mbps ATM | -155Mbps ATM |
| -622Mbps ATM | -622Mbps ATM |

- Cat 6
- 10 Base-T4
 - 100Base-TX
 - 100VG-Anylan
 - 1000 Base-T(Gigabit Ethernet)
 - 155Mbps ATM
 - 622Mbps ATM

Cable Construction



Product Type	Construction	Separator	No.of Pairs	Nom.O.D mm
Cat 5	UTP	-	4	4.6
Cat 5e	UTP	-	25	13.9
Cat 6	UTP	-	4	4.6
	UTP	Separator	4	5.2

TEFLON® is a registered trademark of Dupont

CCTV(CMP)CABLE



Construction and Dimensions

No.	Inner Conductor and Dia.	Insulation Outer mm	Outer Conductor	Outer Dia. of Jacket
RG59/U+2C	BC0.65mm	3.66	90%	6.1
RG6/U+2C	BC1.02mm	4.6	--	4.6



Product Introduction

RG59/U+2C/RT6/U+2C combined network cable is produced as per standard of SJ/T11138-1997 and YD/T322-1996, This product has the transmission speciality of physical foamed R F coaxial cable and symmetrical cable. It is used suitable for transmission of there fore signal below 1 GHz,model audiofrequency of orbelow 150KHz and digital signal of or below 2048Kbits.

Electricial Performance

Norminal Capacitance	52
Max Lopsided DC resistance of conductor	5%
Standard DC Resistance	95
Defensive to outlying audio interfere	>68

Engineering Date

Min.Bending Radius	Outer	4.5
	Inner	8.5
Packing way	100.200m	305m

Reference Performance of Coaxial Cable

Nominal Impedance	75	
Nominal Wavevelocity Rate	80%	
Nominal Capacitance	55.8	
Max.Attenuation (dB/100m)	50MHz	4.6
	200MHz	9.0
	550MHz	15.7
	750MHz	18.3
	800MHz	19.0
Return Loss(≥dB)	VHF	20
	UHF	18
Min.Screning Attenuation (dB)	50MHz	65
	200MHz	75
	800MHz	75

TELEPHONE CABLE SERIES



Structure Flat Shape Telephone Cables

Serial No.	Specification	Insulation Outer Φmm	Overall Outer Φmm	Weight Φmm
YF-001	2x7/0.10	0.9	2.0x4.0	10.5
YF-002	2x7/0.1widen	0.9	2.2x4.5	12.9
YF-003	4x7/0.10	0.9	2.2x4.5	13.1
YF-004	4x7/0.1widen	0.9	2.4x4.9	15.5
YF-005	6x7/0.10	0.9	2.4x6.4	19.3
YF-006	6x7/0.1widen	0.9	2.4x6.9	22.6
YF-007	8x7/0.10	0.9	2.3x8.2	26.3
YF-008	8x7/0.1widen	0.9	2.4x8.9	29.7
YF-009	2x7/0.12	0.9	2.1x4.1	11.6
YF-010	2x7/0.12widen	0.9	2.3x4.6	14.1
YF-011	4x7/0.12	0.9	2.3x4.6	14.7
YF-012	4x7/0.12widen	0.9	2.5x5.0	17.2
YF-013	6x7/0.12	0.9	2.3x6.5	21.6

Structure Of Twist Telephone Conne Cting Cable

Serial No.	Specification	Insulation Outer Φmm	Overall Outer Φmm	Weight Φmm
YF-001	1x2x1/0.40	0.9	2.7	8
YF-002	2x2x1/0.40	0.9	4.0	15
YF-003	3x2x1/0.40	0.9	4.3	19
YF-004	4x2x1/0.40	0.9	4.8	23
YF-005	6x2x1/0.40	0.9	5.7	32
YF-006	8x2x1/0.40	0.9	6.3	42
YF-007	10x2x1/0.40	0.9	8.0	61
YF-008	20x2x1/0.40	0.9	10.0	110
YF-009	25x2x1/0.40	0.9	11.5	134
YF-010	30x2x1/0.40	0.9	12.6	167
YF-011	50x2x1/0.40	0.9	16.0	262
YF-012	100x2x1/0.40	0.9	23.4	486

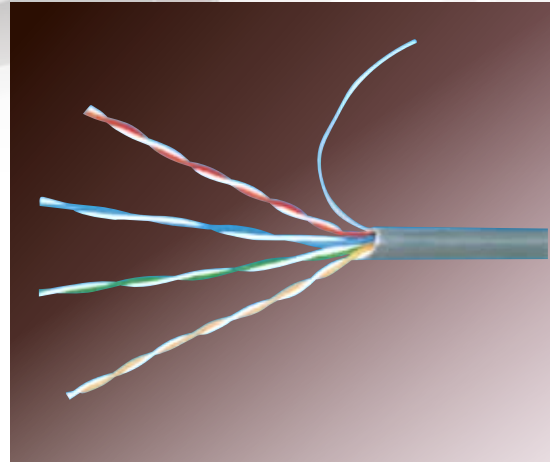
LAN CABLE SERIES

UTP unshielded twisted 4 pairs enhanced category 5e cable (solid)

- Structure: Bare copper, PE insulation, FR PVC/LSOH PVC ROHS jacket.
- Standards: ISO/IEC11801 ,ANSI/TIA/ELA-568A
- Application: used as work-station oution to the FD/IDF and other horizontal cabling, supporting TP-PMD Audio, integrated service digital network (ISDN), ATM155Mbps, 100mbpsTPDDI, Fast Ethernet ETC.
- Certificate: UL, CE, CCC.

Ordering information:

Item No.	Description	Packing	Jacket	Color
D135-P	Solid	305m/ctn	PVC	Multicolor
D135-L	Solid	305m/ctn	LSZH	Multicolor

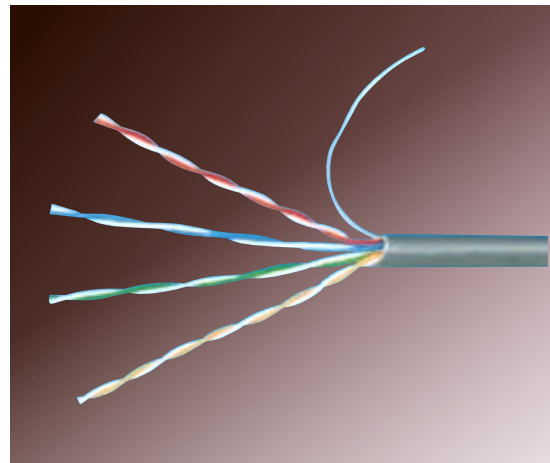


UTP unshielded twisted 4 pairs enhanced category 5e cable (stranded)

- Structure: Bare copper, PE insulation, FR PVC/LSOH PVC ROHS jacket.
- Standards: ISO/IEC11801 ,ANSI/TIA/ELA-568A
- Application: used as work-station oution to the FD/IDF and other horizontal cabling, supporting TP-PMD Audio, integrated service digital network (ISDN), ATM155Mbps, 100mbpsTPDDI, Fast Ethernet ETC.
- Certificate: UL, CE, CCC.

Ordering information:

Item No.	Description	Packing	Jacket	Color
D135S-P	Stranded	305m/ctn	PVC	Multicolor
D135S-L	Stranded	305m/ctn	LSZH	Multicolor

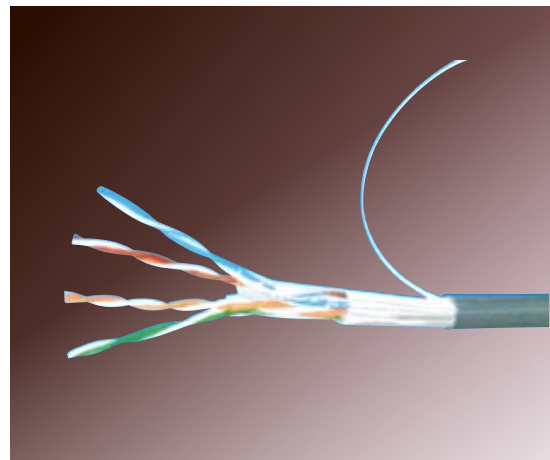


FTP shielded twisted 4 pairs enhanced category 5e cable (solid)

- Structure: Bare copper, PE insulation, FR PVC/LSOH PVC ROHS jacket.
- Standards: ISO/IEC 11801 ,ANSI/TIA/ELA-568A
- Application: used as work-station oution to the FD/IDF and other horizontal cabling, supporting TP-PMD Audio, integrated service digital network (ISDN), ATM 155Mbps, 100mbpsTPDDI, Fast Ethernet ETC.
- Certificate: UL, CE, CCC.

Ordering information:

Item No.	Description	Packing	Jacket	Color
D145-P	Solid	305m/ctn	PVC	Multicolor
D145-L	Solid	305m/ctn	LSZH	Multicolor



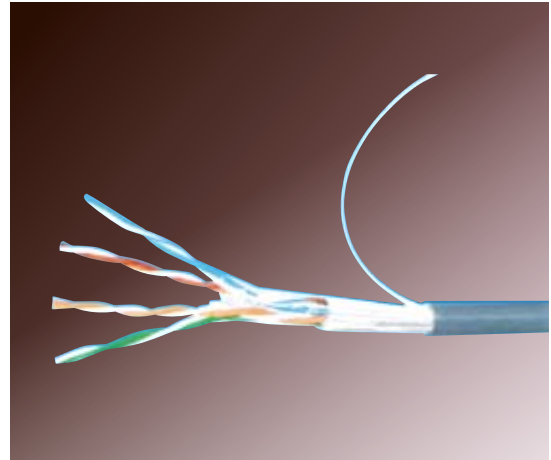
LAN CABLE SERIES

FTP shielded twisted 4 pairs enhanced category 5e cable (stranded)

- Structure: Bare copper, PE insulation, FR PVC/LSOH PVC ROHS jacket.
- Standards: ISO/IEC 11801 ,ANSI/TIA/ELA-568A
- Application: used as work-station oution to the FD/IDF and other horizontal cabling, supporting TP-PMD Audio, integrated service digital network (ISDN), ATM 155Mbps, 100mbps TPDDI, Fast Ethernet ETC.
- Certificate: UL, CE, CCC.

Ordering information:

Item No.	Description	Packing	Jacket	Color
D145-P	Stranded	305m/ctn	PVC	Multicolor
D145S-L	Stranded	305m/ctn	LSZH	Multicolor

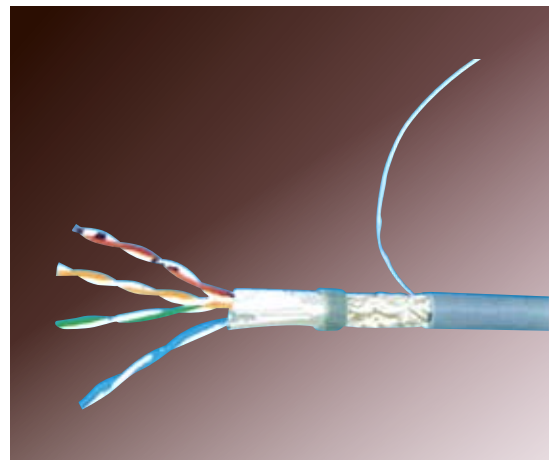


SFTP double fully shielded twisted 4 pairs category 5e cable (solid)

- Structure: Bare copper, PE insulation, FR PVC/LSOH PVC ROHS jacket.
- Standards: ISO/IEC 11801 ,ANSI/TIA/ELA-568A
- Application: used as work-station oution to the FD/IDF and other horizontal cabling, supporting TP-PMD Audio, integrated service digital network (ISDN), ATM 155Mbps, 100mbps TPDDI, Fast Ethernet ETC.
- Certificate: UL, CE, CCC.

Ordering information:

Item No.	Description	Packing	Jacket	Color
D155-P	Solid	305m/ctn	PVC	Multicolor
D155-L	Solid	305m/ctn	LSZH	Multicolor

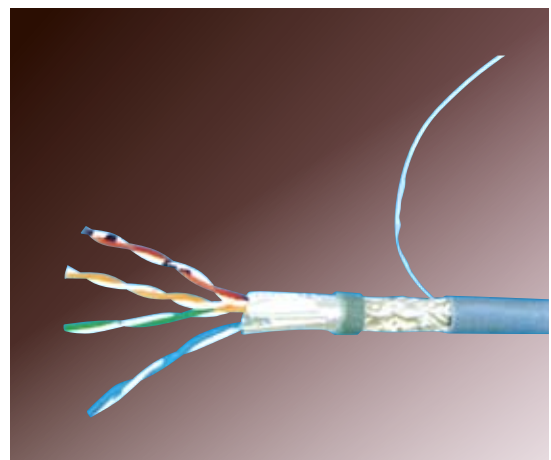


SFTP double fully shielded twisted 4 pairs category 5e cable (stranded)

- Structure: Bare copper, PE insulation, FR PVC/LSOH PVC ROHS jacket.
- Standards: ISO/IEC 11801 ,ANSI/TIA/ELA-568A
- Application: used as work-station oution to the FD/IDF and other horizontal cabling, supporting TP-PMD Audio, integrated service digital network (ISDN), ATM 155Mbps, 100mbps TPDDI, Fast Ethernet ETC.
- Certificate: UL, CE, CCC.

Ordering information:

Item No.	Description	Packing	Jacket	Color
D155S-P	Stranded	305m/ctn	PVC	Multicolor
D155S-L	Stranded	305m/ctn	LSZH	Multicolor



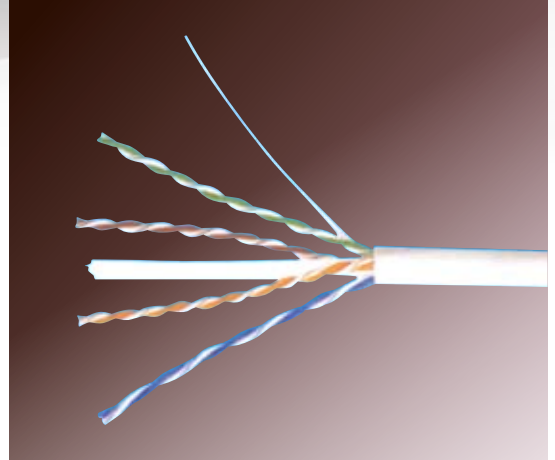
LAN CABLE SERIES

UTP unshielded twisted 4 pairs category 6 cable (solid)

- Structure: Bare copper, PE insulation, FR PVC/ LSOH PVC ROHS jacket.
- Standards: ISO/IEC11801 ,ANSI/TIA/ELA-568A
- Application: used as work-station oution to the FD/IDF and other horizontal cabling, supporting TP-PMD Audio, integrated service digital network (ISDN),ATM 155Mbps, 100mbpsTPDDI, Fast Ethernet ETC.
- Certificate: UL, CE, CCC.

Ordering information:

Item No.	Description	Packing	Jacket	Color
D165-P	Solid	305m/ctn	PVC	Multicolor
D165-L	Solid	305m/ctn	LSZH	Multicolor

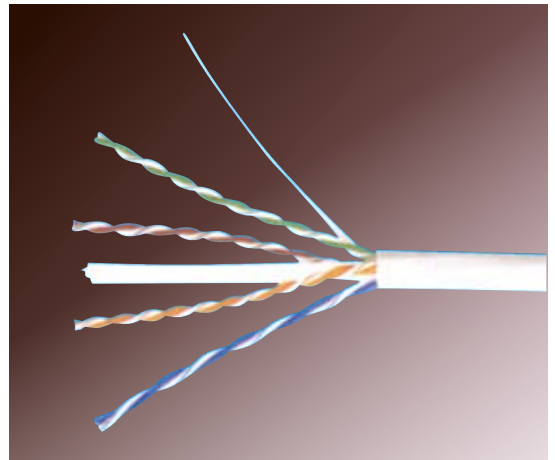


UTP unshielded twisted 4 pairs category 6 cable (stranded)

- Structure: Bare copper, PE insulation, FR PVC/LSOH PVC ROHS jacket.
- Standards: ISO/IEC11801 ,ANSI/TIA/ELA-568A
- Application: used as work-station oution to the FD/IDF and other horizontal cabling, supporting TP-PMD Audio, integrated service digital network (ISDN),ATM155Mbps, 100mbpsTPDDI, Fast Ethernet ETC.
- Certificate: UL, CE, CCC.

Ordering information:

Item No.	Description	Packing	Jacket	Color
D165S-P	Stranded	305m/ctn	PVC	Multicolor
D165S-L	Stranded	305m/ctn	LSZH	Multicolor

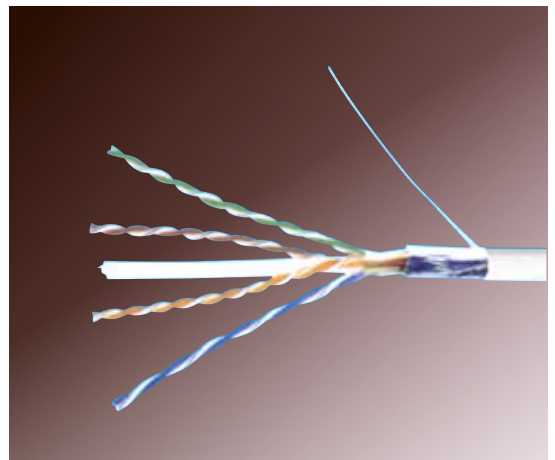


FTP shielded twisted 4 pairs category 6 cable (solid)

- Structure: Bare copper, PE insulation, FR PVC/LSOH PVC ROHS jacket.
- Standards: ISO/IEC 11801, ANSI/TIA/ELA-568A
- Application: used as work-station oution to the FD/IDF and other horizontal cabling, supporting TP-PMD Audio, integrated service digital network (ISDN),ATM 155Mbps, 100mbpsTPDDI, Fast Ethernet ETC.
- Certificate: UL, CE, CCC.

Ordering information:

Item No.	Description	Packing	Jacket	Color
D175-P	Solid	305m/ctn	PVC	Multicolor
D175-L	Solid	305m/ctn	LSZH	Multicolor



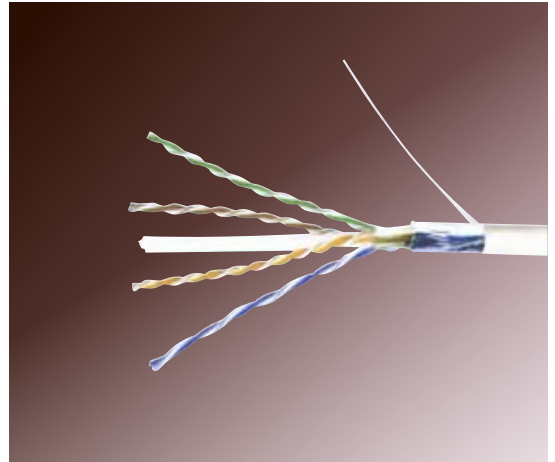
LAN CABLE SERIES

FTP shielded twisted 4 pairs category 6 cable (stranded)

- Structure: Bare copper, PE insulation, FR PVC/LSOH PVC ROHS jacket.
- Standards: ISO/IEC 11801, ANSI/TIA/ELA-568A
- Application: used as work-station oution to the FD/IDF and other horizontal cabling, supporting TP-PMD Audio, integrated service digital network (ISDN), ATM 155Mbps, 100Mbps TPDDI, Fast Ethernet ETC.
- Certificate: UL, CE, CCC.

Ordering information:

Item No.	Description	Packing	Jacket	Color
D175S-P	Stranded	305m/ctn	PVC	Multicolor
D145S-L	Stranded	305m/ctn	LSZH	Multicolor

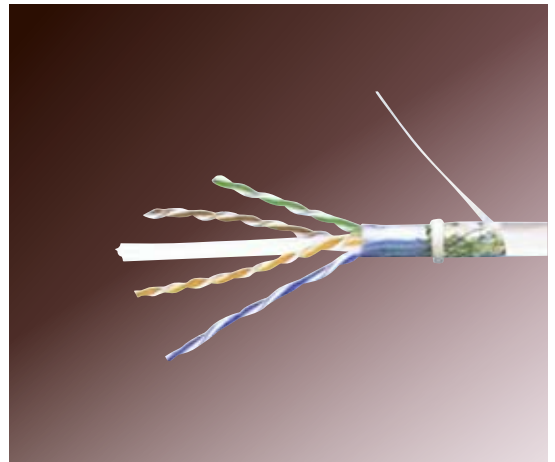


SFTP double fully shielded twisted 4 pairs category 6 cable (Solid)

- Structure: Bare copper, PE insulation, FR PVC/LSOH PVC ROHS jacket.
- Standards: ISO/IEC 11801, ANSI/TIA/ELA-568A
- Application: used as work-station oution to the FD/IDF and other horizontal cabling, supporting TP-PMD Audio, integrated service digital network (ISDN), ATM 155Mbps, 100Mbps TPDDI, Fast Ethernet ETC.
- Certificate: UL, CE, CCC.

Ordering information:

Item No.	Description	Packing	Jacket	Color
D185-P	Solid	305m/ctn	PVC	Multicolor
D185S-L	Solid	305m/ctn	LSZH	Multicolor

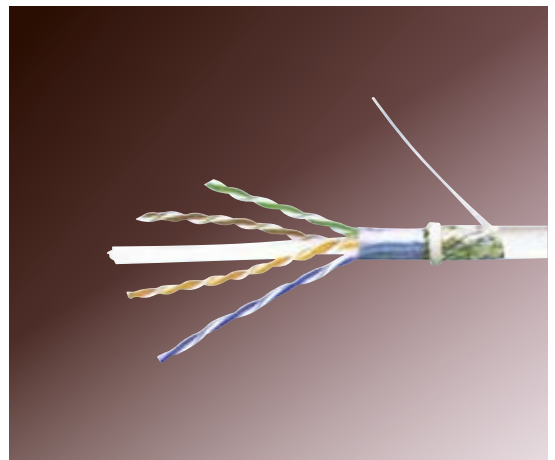


SFTP double fully shielded twisted 4 pairs category 6 cable (standed)

- Structure: Bare copper, PE insulation, FR PVC/LSOH PVC ROHS jacket.
- Standards: ISO/IEC 11801, ANSI/TIA/ELA-568A
- Application: used as work-station oution to the FD/IDF and other horizontal cabling, supporting TP-PMD Audio, integrated service digital network (ISDN), ATM 155Mbps, 100Mbps TPDDI, Fast Ethernet ETC.
- Certificate: UL, CE, CCC.

Ordering information:

Item No.	Description	Packing	Jacket	Color
D185S-P	Solid	305m/ctn	PVC	Multicolor
D185S-L	Solid	305m/ctn	LSZH	Multicolor



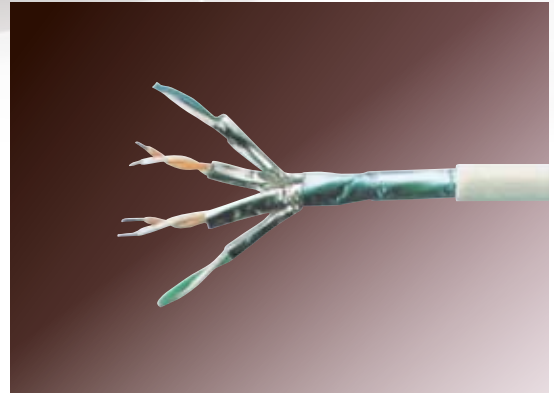
LAN CABLE SERIES

F/FTP twisted 4 pairs category 7 cable(solid)

- 600 MHz Cat.7F/FTP cable
- Compact Cat. 7 compliant shielded cable
- Individually foiled pairs plus overall foil shield
- AWG 23 solid conductor
- LSZH sheath material

Ordering information:

Item No.	Description	Packing	Jacket	Color
D195-P	Solid	305m/ctn	PVC	Multicolor
D195-L	Solid	305m/ctn	LSZH	Multicolor



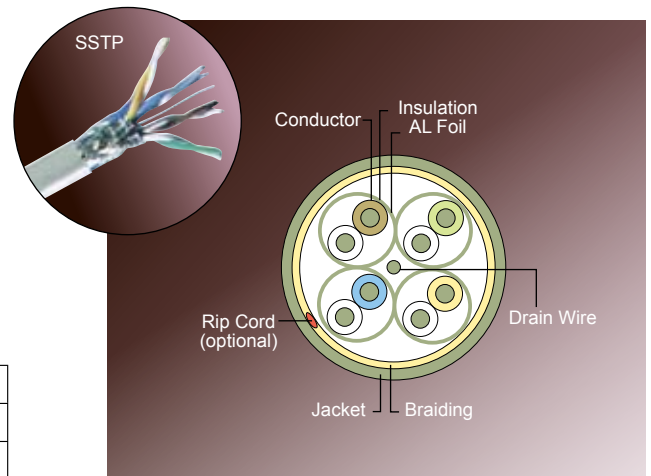
S/STP twisted 4 pairs category 7 cable (solid)

Product Description:

- Ultra high bandwidth 600MHz
- For next generation Ethernet and 1.2Gbps ATM
- Flammability Grade:CMX,CM,MP,CMG,MPG,CMP,MPR
- LSZH Jacket or Teflon insulation available
- Rip cord optional
- Environmental friendly ReelexII package available

Ordering information:

Item No.	Description	Packing	Jacket	Color
D205-P	Solid	305m/ctn	PVC	Multicolor
D205-L	Solid	305m/ctn	LSZH	Multicolor



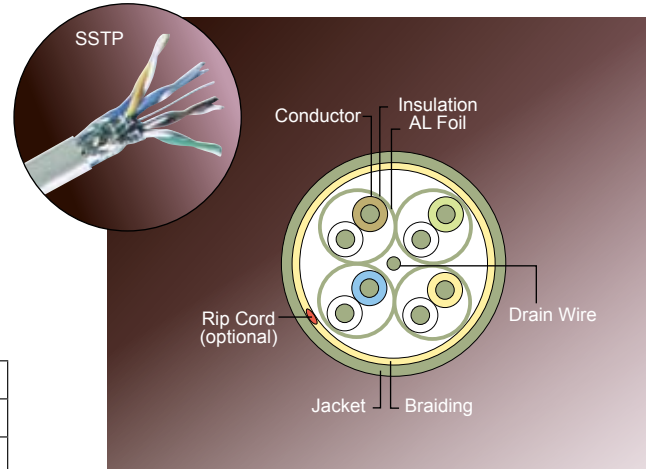
S/STP twisted 4 pairs category 8 cable (solid)

Product Description:

- Ultra high bandwidth 1200MHz
- For next generation Ethernet and 1.2Gbps ATM
- Flammability Grade:CMX,CM,MP,CMG,MPG,CMP,MPR
- LSZH Jacket or Teflon insulation available
- Rip cord optional
- Environmental friendly ReelexII package available

Ordering information:

Item No.	Description	Packing	Jacket	Color
D215-P	Solid	305m/ctn	PVC	Multicolor
D215-L	Solid	305m/ctn	LSZH	Multicolor



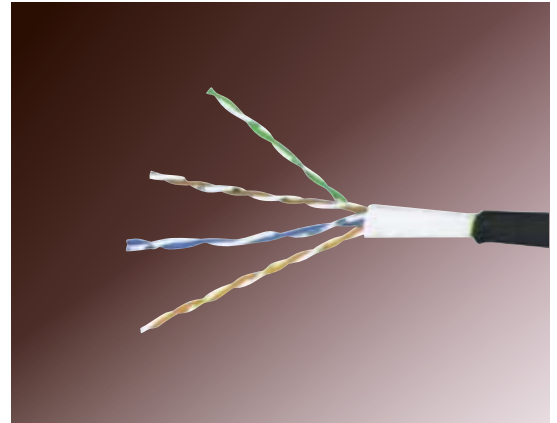
LAN CABLE SERIES

Water retardant cable

- Structure: Bare solid cord, PE insulation, FR PVC/LSOH PVC jacket.
- Standards: ISO/IEC 11801, ANSI/TIA/EIA-568A
- Application: used as work-station outlet to the FD/IDF and other horizontal cabling, supporting TP-PMD Audio, integrated service digital network (ISDN), ATM 155Mbps, 100Mbps TPDDI, Fast Ethernet etc.

Ordering information:

Item No.	Description	Packing	Jacket	Color
D106	UTP Cat.5	305m/ctn	PE	Black

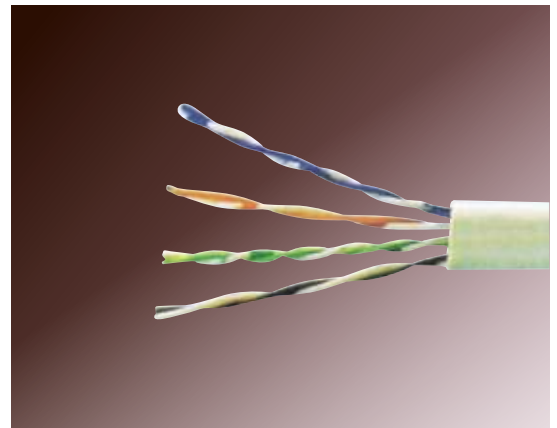


Under carpet cable

- Structure: Bare solid cord, PE insulation, FR PVC/LSOH PVC jacket.
- Standards: ISO/IEC 11801, ANSI/TIA/EIA-568A
- Application: used as work-station outlet to the FD/IDF and other horizontal cabling, supporting TP-PMD Audio, integrated service digital network (ISDN), ATM 155Mbps, 100Mbps TPDDI, Fast Ethernet etc.

Ordering information:

Item No.	Description	Packing	Jacket	Color
D107	UTP Cat.5	305m/ctn	PVC	Multicolor

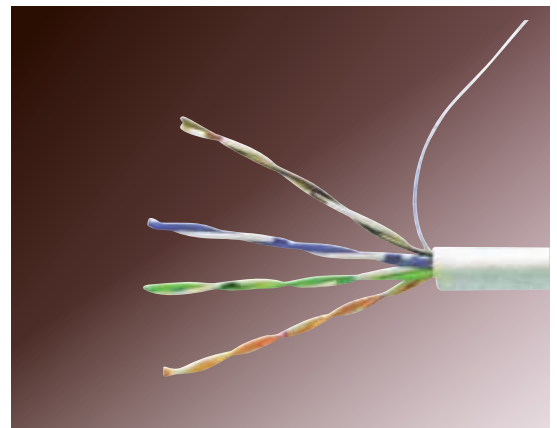


Flame retardant cable

- Structure: Bare solid cord, PE insulation, FR PVC/LSOH PVC jacket.
- Standards: ISO/IEC 11801, ANSI/TIA/EIA-568A
- Application: used as work-station outlet to the FD/IDF and other horizontal cabling, supporting TP-PMD Audio, integrated service digital network (ISDN), ATM 155Mbps, 100Mbps TPDDI, Fast Ethernet etc.

Ordering information:

Item No.	Description	Packing	Jacket	Color
D108	UTP Cat.5	305m/ctn	PVC	Multicolor

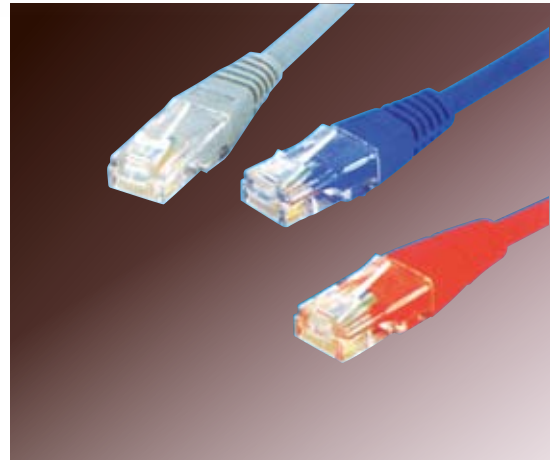


NETWORK PATCH CORD

Patch cord-----SX-X series

How to connect:

568A connection	568B connection
1-1 white green	1-1 white orange
2-2 green	2-2 orange
3-3 white orange	3-3 white green
4-4 blue	4-4 blue
5-5 white blue	5-5 white blue
6-6 orange	6-6 green
7-7 white brown	7-7 white brown
8-8 brown	8-8 brown
s-s shielding	s-s shielding



- Available in various brilliant colors with or without cap
- Meet TIA568-A and TIA568-B

Ordering information:

Item No.	Description	Length
S3025-X	UTP CAT.5	0.25M
S3030-X	UTP CAT.5	0.30M
S3050-X	UTP CAT.5	0.50M
S3100-X	UTP CAT.5	1.0M
S3150-X	UTP CAT.5	1.5M
S3200-X	UTP CAT.5	2.0M
S3300-X	UTP CAT.5	3.0M
S3500-X	UTP CAT.5	5.0M
S3700-X	UTP CAT.5	7.0M
S31000-X	UTP CAT.5	10.0M
S31500-X	UTP CAT.5	15.0M
S32000-X	UTP CAT.5	20.0M
S32500-X	UTP CAT.5	25.0M
S33000-X	UTP CAT.5	30.0M
S35000-X	UTP CAT.5	50.0M

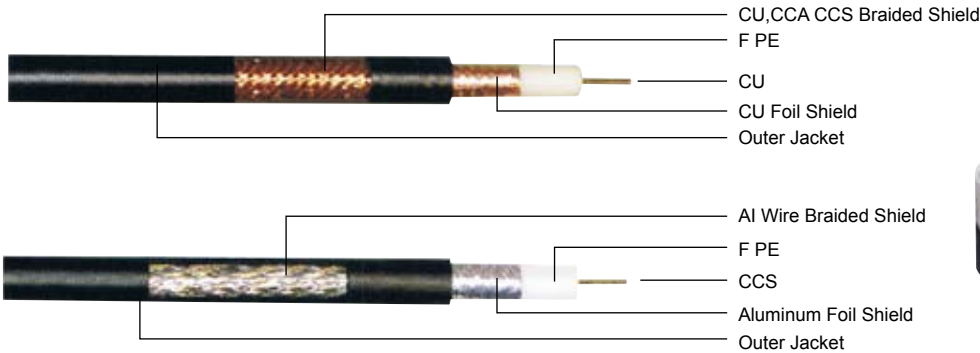
Item No.	Description	Length
S4025-X	FTP CAT.5	0.25M
S4030-X	FTP CAT.5	0.30M
S4050-X	FTP CAT.5	0.50M
S4100-X	FTP CAT.5	1.0M
S4150-X	FTP CAT.5	1.5M
S4200-X	FTP CAT.5	2.0M
S4300-X	FTP CAT.5	3.0M
S4500-X	FTP CAT.5	5.0M
S4700-X	FTP CAT.5	7.0M
S41000-X	FTP CAT.5	10.0M
S41500-X	FTP CAT.5	15.0M
S42000-X	FTP CAT.5	20.0M
S42500-X	FTP CAT.5	25.0M
S43000-X	FTP CAT.5	30.0M
S45000-X	FTP CAT.5	50.0M

Item No.	Description	Length
S5025-X	SFTP CAT.5	0.25M
S5030-X	SFTP CAT.5	0.30M
S5050-X	SFTP CAT.5	0.50M
S5100-X	SFTP CAT.5	1.0M
S5150-X	SFTP CAT.5	1.5M
S5200-X	SFTP CAT.5	2.0M
S5300-X	SFTP CAT.5	3.0M
S5500-X	SFTP CAT.5	5.0M
S5700-X	SFTP CAT.5	7.0M
S51000-X	SFTP CAT.5	10.0M
S51500-X	SFTP CAT.5	15.0M
S52000-X	SFTP CAT.5	20.0M
S52500-X	SFTP CAT.5	25.0M
S53000-X	SFTP CAT.5	30.0M
S55000-X	SFTP CAT.5	50.0M

Colors available: Gray, Black, Blue, Red, Yellow, Green, Orange.

COAXIAL CABLE

RG 6/U SERIES 75 OHM BROADBAND COAXIAL CABLE



Component(Nominal)	Standard Shield		Tri-Shield		Quad Shield	
	Inches	mm	Inches	mm	Inches	mm
Center Conductor Diameter	0.040	1.02	0.040	1.02	0.040	1.02
Diameter Over Dielectric	0.180	4.57	0.180	4.57	0.180	4.57
Diameter Over 1 st shield (tape)	0.187	4.57	0.187	4.57	0.187	4.57
Diameter Over Jacket	0.272	6.91	0.272	6.91	0.299	7.60
Diameter Of Steel Messenger	0.030	0.76	0.030	0.76	0.034	0.86
Jacket Wall Thickness	0.051 (single)	1.30	0.051 (single)	1.30		
Diameter Of Steel Messenger	0.072 (dual)	1.83	0.072 (dual)	1.83		

Electrical Characteristics

Nominal Impedance	75Ohms
Nominal Velocity of Propogaton	85%

Mechanical Characteristics

Minimun Breaking	0.051	180Lbs	82kgs
Strength Messenger	0.072	365Lbs	166kgs

Corrosion Resistant Drops(BW&APD)
 Many products are available with a choice of two corrosion resistant treatments. Contact our sales and marking office for spesific information.

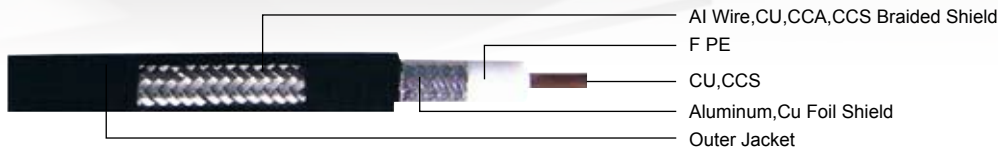
Brightre
 Bright Wire™ is dry.ant - corrosive treatment that chemically combines to from a protective shield against water and subsequent corrosion.(Wxceeds the SCTE requirement for corrosion resistant cable.)
 APD is a non-flowing, amorphous polypropylene flooding com.pound.
 APD meets NEC Article 830V Rating, UL Listed
 Spectify BrightWire of APD when ordering
 Product:
 RG660BBV
 RG660BV-APD

Attenuation (@68° F, 20° C)

Frequency(MHz)	Maximun(dB/100ft)	Maximun(dB/100m)
5	0.57	1.87
55	1.60	5.25
211	2.87	9.43
250	3.12	10.24
270	3.24	10.63
300	3.43	11.25
330	3.61	11.84
350	3.72	12.20
400	4.00	13.12
450	4.28	14.04
500	4.51	14.80
550	4.76	15.62
600	4.98	16.34
750	5.62	18.44
870	6.09	19.99
950	6.50	21.33
1000	6.54	21.46
1450	8.00	26.25
1750	8.74	28.67
2050	9.46	31.04
2500	9.97	32.69
3000	11.00	36.10

COAXIAL CABLE

RG 11/U SERIES 75 OHM BROADBAND COAXIAL CABLE



Component(Nominal)	Standard Shield		Tri-Shield		Quad Shield	
	Inches	mm	Inches	mm	Inches	mm
Center Conductor Diameter	0.064	1.63	0.064	1.63	0.064	1.63
Diameter Over Dielectric	0.280	7.11	0.280	7.11	0.280	7.11
Diameter Over 1 st shield (tape)	0.287	7.29	0.287	7.29	0.287	7.29
Diameter Over Jacket	0.395	10.03	0.395	10.03	0.405	10.29
Diameter Of Steel Messenger	0.042	1.07	0.039	0.99	0.037	0.94
Jacket Wall Thickness	0.072 (single)	1.83	0.072 (single)	1.83	0.072 (single)	1.83
Diameter Of Steel Messenger	0.109 (dual)	2.77	0.109 (dual)	2.77	0.109 (dual)	2.77

Electrical Characteristics

Nominal Impedance	75Ohms
Nominal Velocity of Propagation	85%

Mechanical Characteristics

Minimum Breaking	0.072	365Lbs	166kgs
Strength Messenger	0.109	1088Lbs	818kgs

Corrosion Resistant Drops(BW&APD)

Many products are available with a choice of two corrosion resistant treatments. Contact our sales and marketing office for specific information.

Brightre

Bright Wire™ is dry.ant - corrosive treatment that chemically combines to form a protective shield against water and subsequent corrosion.(Wxceeds the SCTE requirement for corrosion resistant cable.)

APD is a non-flowing, amorphous polypropylene flooding compound.

APD meets NEC Article 830V Rating, UL Listed Specify BrightWire or APD when ordering

Product:

RG1160BBV

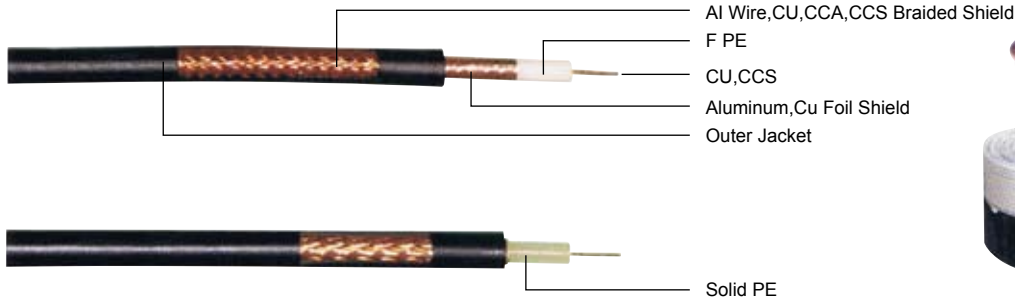
RG1160BV-APD

Attenuation (@68° F, 20° C)

Frequency(MHz)	Maximun(dB/100ft)	Maximun(dB/100m)
5	0.83	1.25
55/Channel2	0.96	3.15
83/Channel6	1.18	3.87
187/Channel9	1.75	5.74
211/Channel13	1.90	6.23
250	2.05	6.72
300	2.25	7.38
350	2.42	7.94
400	2.60	8.53
450	2.75	9.02
500	2.90	9.51
550	3.04	9.97
600	3.18	10.43
750	3.65	11.97
865	3.98	13.05
1000	4.35	14.27
1450	5.56	15.52
1750	6.98	17.53
2050	8.41	20.94
2500	9.72	23.60
3000	10.65	26.65

COAXIAL CABLE

RG 59/U SERIES 75 OHM BROADBAND COAXIAL CABLE



Component(Nominal)	Standard Shield		Tri-Shield		Quad Shield	
	Inches	mm	Inches	mm	Inches	mm
Center Conductor Diameter	0.032	0.81	0.032	0.81	0.032	0.81
Diameter Over Dielectric	0.144	3.66	0.144	3.66	0.144	3.65
Diameter Over 1 st shield (tape)	0.151	3.84	0.151	3.84	0.151	3.84
Diameter Over Jacket	0.240	6.10	0.240	6.10	0.265	6.73
Diameter Of Steel Messenger	0.032	0.81	0.030	0.76	0.034	0.86
Jacket Wall Thickness	0.051 (single)	1.30	0.051 (single)	1.30	0.051 (single)	1.30
Diameter Of Steel Messenger	0.072 (dual)	1.83	0.072 (dual)	1.83	0.072 (dual)	1.83

Electrical Characteristics

DC Resistance of inner conductor(Ω /km)	163 CCS	35 BC
DC Resistance of outer conductor(Ω /km)	40 AL	20 TC
Impedance (Ω)	75 \pm 3.0	
Capacitance (pF/m)	54 \pm 3.0	
Wavevelocity rate%	87%	
Return (\geq dB)	VHF5-300MHz \geq	20dB
	UHF300-960MHz \geq	18dB

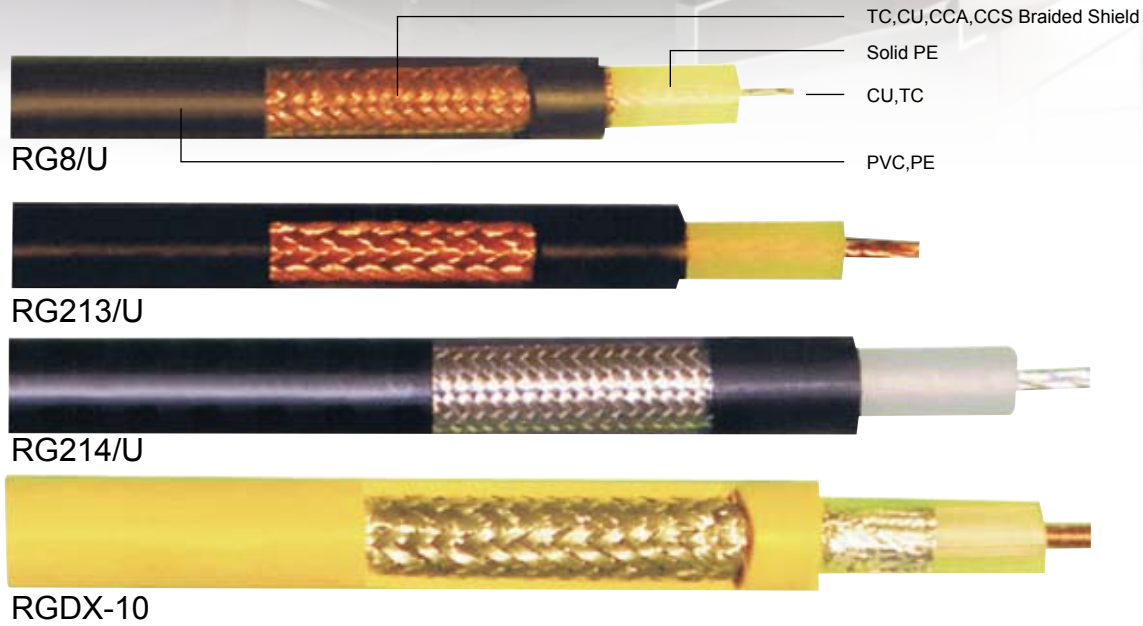
Electrical Characteristics Nominal Impedance: 75ohms
Capacitance:16.2 Velocity of Propogation:85%
Attenuation(@68° F, 20° C)

Frequency(MHz)	Maximun(dB/100ft)	Maximun(dB/100m)
1	0.58	1.90
10	0.89	2.92
50	1.81	5.94
100	2.48	8.13
200	3.43	11.25
400	4.88	16.01
700	6.56	21.52
900	7.48	24.53
1000	7.91	25.94
1200	8.72	28.60
1450	9.65	31.65
1800	10.84	35.56
2200	12.08	39.62
2500	14.65	44.68
3000	17.87	50.35

Aduio pair (F 59HEC/3-22 Only)

Three	22AWG (.0285in.) bare copper
Insulation	High density polyethylene
Drain	24AWG (.024in.)tinned copper
Ripcord	Polyester
Shielding	Aluminum (each pair)
Identification	Color cording (std.):
Red/black/red/green	
Reel	1421/2x6x13.
Length	1000ft
Cable Weight	701bs./1000ft.

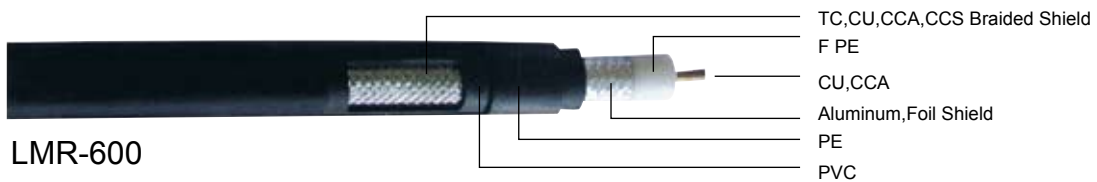
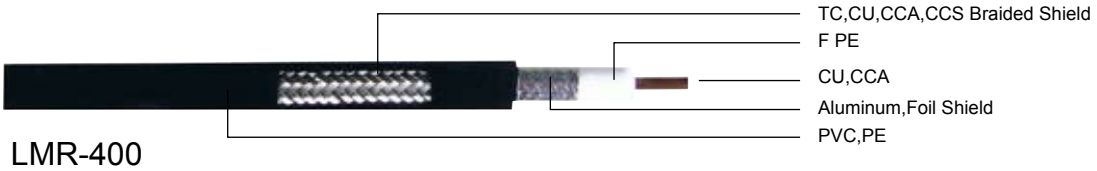
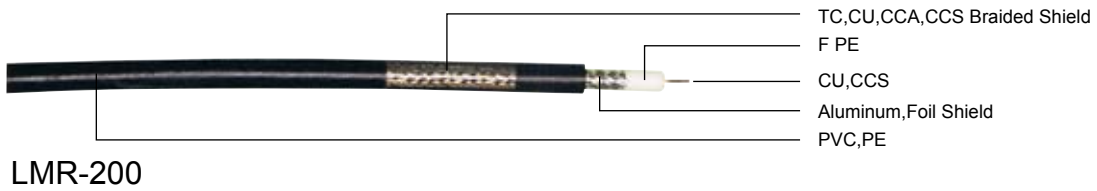
COAXIAL CABLE



Type ul Conductor insulation BraidShield jacket impedance Capaci

		mm		No./mm		No./mm	mm		@100Mhz		
RG-5/U	-	1/1.29	BC	4.7	LDPE	16/9/0.16	24/8/0.16	BC	8.4±0.20	PVC	52.5
RG-8A/U	1354	7/0.724	BC	7.24	LDPE	24/8/0.18	-	BC	10.3±0.20	NC - PVC	52
RG-11A/U	1354	7/0.724	TC	7.24	LDPE	24/8/0.18	-	BC	10.3±0.20	NC - PVC	75
RG-13/U	1354	7/0.724	TC	7.11	LDPE	24/9/0.16	24/8/0.16	BC	10.7±0.20	PVC	74
RG-13A/U	1354	7/0.724	TC	7.11	LDPE	24/9/0.16	24/8/0.16	BC	10.7±0.20	NC - PVC	74
RG-14/U	-	1/2.59	BC	9.4	LDPE	24/10/0.18	24/8/0.18	BC	13.8±0.20	PVC	52
RG-14A/U	-	1/2.59	BC	9.4	LDPE	24/10/0.18	24/8/0.18	TC	13.8±0.20	NC - PVC	52
RG-15/U	-	1/1.45	CCS	9.4	LDPE	24/10/0.18	24/8/0.18	BC	13.8±0.20	PVC	76
RG-29/U	1354	1/0.813	BC	2.95	LDPE	16/7/0.127	-	BC	4.7±0.15	PE	71
RG-34/U	-	7.072	BC	11.6	LDPE	24/9/0.16	-	BC	15.9±0.25	PVC	71
RG-34B/U	-	7/0.632	BC	11.7	LDPE	24/10/0.18	-	BC	16.0±0.25	NC - PVC	75
RG-54/VU	-	7/0.386	BC	4.52	LDPE	16/9/0.16	-	BC	6.1±0.15	PE	58
RG-55/U	-	1/0.813	BC	2.9	LDPE	16/7/0.127	16/8/0.127	BC	5.0±0.15	PE	50.5
RG-58A/U	1354	19/0.18	TC	2.95	LDPE	16/8/0.127	-	TC	4.95±0.15	PVC	50
RG-58C/U	1354	19/0.18	TC	2.95	LDPE	16/8/0.127	-	BC	4.95±0.15	NC - PVC	50
RG-59A/U	1354	1/0.643	CCS	3.71	LDPE	16/7/0.16	-	TC	6.15±0.15	NC - PVC	73
RG-59B/U	-	1/0.584	CCS	3.71	LDPE	16/7/0.16	-	BC	6.15±0.15	NC - PVC	93
RG-62A/U	1354	1/0.613	CCS	3.71	LDPE	16/7/0.16	-	BC	6.15±0.15	NC - PVC	125
RG-63B/U	1354	1/0.643	CCS	7.24	LDPE	24/8/0.18	-	BC	10.3±0.20	NC - PVC	125
RG-71/U	1354	1/0.643	CCS	3.71	LDPE	16/7/0.16	16/8/0.127	BC	6.4±0.15	PVC	93
RG-89/U		1/0.643	CCS	7.24	LDPE	16/12/0.18	-	BC	16.0±0.25	PVC	125
RG-122/U	1354	27/0.13	TC	2.44	LDPE	16/6/0.127	-	BC	4.06±0.15	NC - PVC	105
RG-133A/U	1354	1/0.645	BC	7.2	LDPE	24/8/0.18	-	BC	10.3±0.20	NC - PVC	95
RG-174/U	1354	7/0.16	BC	1.52	LDPE	16/5/0.10	-	TC	2.54±0.15	NC - PVC	50
RG-213/U	-	7/0.752	BC	7.24	LDPE	16/5/0.10	-	BC	10.3±0.20	NC - PVC	50
RG-216/U	-	7/0.404	TC	7.24	LDPE	24/9/0.16	24/8/0.16	BC	10.8±0.20	NC - PVC	75
RG-217/U	-	1/2.96	BC	9.4	LDPE	24/10/0.18	24/8/0.18	BC	13.8±0.25	NC - PVC	50

LMR SERIES 750HM COAXIAL CABLE



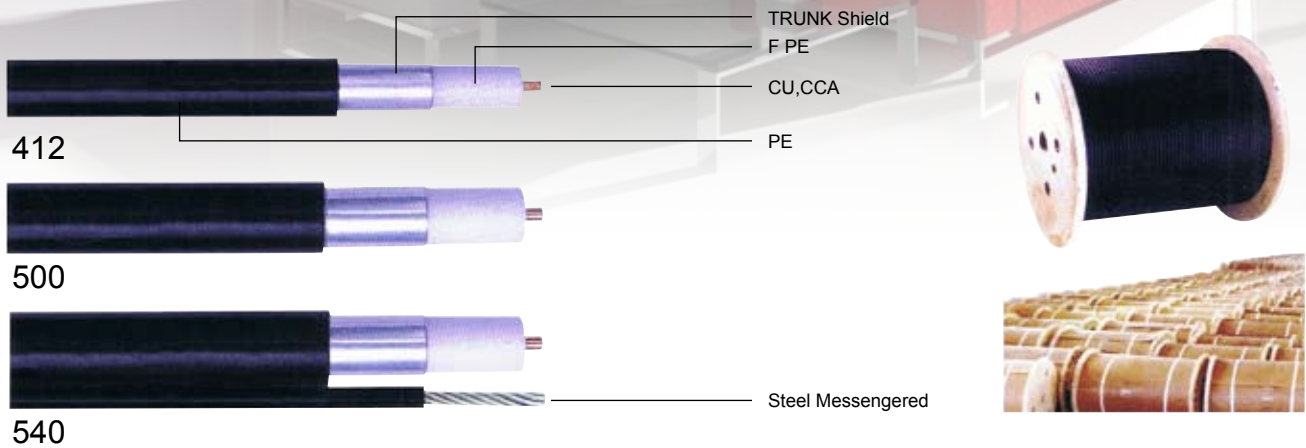
Construction (Diameter:mm)

Item	100A	195	200	240	300	400	500	600	900	1200	1700
Inner conductor	0.46	0.94	1.12	1.42	1.78	2.74	3.61	4.47	6.65	8.86	13.39
Dielectric	1.52	2.80	2.95	9.40	11.56	17.27	9.40	11.56	17.27	23.37	34.29
Outer conductor	2.11	3.53	3.66	4.52	5.72	8.13	10.29	12.45	18.59	24.69	35.61
Jacket	2.79	4.95	4.95	6.10	7.62	10.29	12.70	14.99	22.10	30.48	42.42

Performance

Item	100A	195	200	240	300	400	500	600	900	1200	1700	
Min.bending radius (mm)	6.4	12.7	12.7	19.1	22.2	25.4	31.8	38.1	76.2	165.1	342.9	
Operating temperature (°C)	-40°C~+70°C											
Installation temperature (°C)	-40°C~+70°C											
Nomial weight (kg/m)	0.02	0.03	0.03	0.05	0.08	0.10	0.14	0.20	0.40	0.67	1.10	
Flat plate crush resistance (kg/mm ²)	0.18	0.27	0.27	0.36	0.54	0.71	0.89	1.07	1.79	4.47	5.36	
Tensile strength (kg)	6.8	18.2	18.2	36.3	54.5	72.6	118	158.9	340.5	590.2	681.0	
DC resistance (Ω/km)	Inner conductor (CCA)	26.6	24.94	17.59	10.50	6.96	4.56	2.69	1.74	1.77	1.06	0.69
	Outer conductor	31.2	16.08	16.08	12.76	7.25	5.41	4.17	3.94	1.80	1.21	0.89
Insulation resistance (MΩ/Km)	5000											
Dielectric strength (kv)	1.6											
Velocity of propagation (%)	66	80	83	85	86	87	86	87	87	88	89	
Peak power rating (kw)	0.6	2.5	2.5	5.6	10	16	22	40	62	90	202	
Cutoff frequency (GHz)	90	41	39	31	24.5	16.2	12.6	10.3	6.9	5.2	3.6	
Characteristic impedance (Ω)	50											
V.S.W.R	(1~3000MHz) ≤1.5											
Voltage withstand (VDC)	500	1000	1000	1500	2000	2500	3000	4000	5000	6000	9000	
Capacitance (pF/m)	101.1	79.70	80.4	79.4	79.1	78.4	77.40	76.8	76.8	75.8	74.8	
Inductance (μH/m)	0.25	0.21	0.20	0.20	0.20	0.20	0.19	0.19	0.19	0.18	0.19	
Shielding effectiveness	>90dB											
Phase stability	<10ppm/°C											

TRUNK AND DISTRIBUTION CABLE



Physical Dimensions

Attenuation (20°C, ≤dB/100m)

Component	412B mm	412L mm	412T mm	500B mm	500L mm	500T mm	540B mm	540L mm	540T mm
Center Conductor	2.26	2.26	2.26	2.77	2.77	2.77	3.15	3.15	3.15
Dielectric	9.20	9.20	9.20	11.43	11.43	11.43	13.00	13.00	13.00
Outer Conductor	10.07	10.00	10.30	12.30	12.20	12.70	13.87	13.75	14.40
Outer Conductor Thickness	--	--	0.60	--	--	0.65	--	--	0.70
Jacket	12.30	12.30	12.30	14.22	14.22	14.22	15.90	15.90	15.90
Jacket Wall Thickness	1.10	1.15	1.05	1.00	1.00	0.76	1.00	1.00	0.75
Messenger	2.77	2.77	2.77	2.77	2.77	2.77	2.77	2.77	2.77

Minimum Breaking Strength of Messenger	1800lbs.	816kgf
Dielectric Adhesion	>20N/5cm	

Frequency(MHz)	412B	412L	412T	500B	500L	500T	540B	540L	540T
5	0.66	0.66	0.66	0.52	0.52	0.52	0.46	0.46	0.46
55	2.10	2.10	2.10	1.77	1.77	1.77	1.54	1.54	1.54
211	4.43	4.43	4.43	3.58	3.58	3.58	3.12	3.12	3.12
300	5.35	5.35	5.35	4.30	4.30	4.30	3.71	3.71	3.71
325	5.58	5.58	5.58	4.49	4.49	4.49	3.87	3.87	3.87
450	6.73	6.73	6.73	5.35	5.35	5.35	4.59	4.59	4.59
500	7.06	7.06	7.06	5.67	5.67	5.67	4.89	4.89	4.89
600	7.75	7.75	7.75	6.27	6.27	6.27	5.38	5.38	5.38
750	8.70	8.10	8.10	7.09	7.09	7.09	6.07	6.07	6.07
865	9.32	9.32	9.32	7.68	7.68	7.68	6.56	6.56	6.56
1000	10.10	10.10	10.10	8.27	8.27	8.27	7.12	7.12	7.12
1350	13.86	13.86	13.86	15.78	15.78	15.78	12.41	12.41	12.41
1750	15.78	15.78	15.78	12.41	12.41	12.41	10.69	10.69	10.69
2150	17.48	17.48	17.48	13.26	13.26	13.26	11.98	11.98	11.98

Electrical Characteristics

	412B	412L	412T	500B	500L	500T	540B	540L	540T
Capacitance	50/span>3.0 nf/km			50/span>3.0 nf/km			50?.0nf/km		
Impedance	75/span>2.5 ohms			75/span>2.5 ohms			75?.0 ohms		
Velocity of Propagation	87%			87%			88%		
shielding Effectiveness									
55MHz≥	60dB	85dB	100dB	60dB	85dB	100dB	60dB	85dB	100dB
300MHz≥	60dB	85dB	100dB	70dB	90dB	110dB	70dB	90dB	110dB
1000MHz≥	60dB	85dB	100dB	70dB	90dB	110dB	70dB	90dB	110dB
Return Loss (100% swept)									
1~470MHz≥	22dB	20dB	22dB	22dB	20dB	22dB	22dB	20dB	22dB
470~1000MHz≥	20dB	18dB	20dB	20dB	18dB	20dB	20dB	18dB	20dB



YF42225

9.5mm TV plug to 9.5mm TV plug,
3C2V



YF42231

9.5mm TV plug(angle) to
9.5mm TV plug,
3C2V



YF42226

9.5mm TV plug to 9.5mm TV jack,
3C2V



YF42232

9.5mm TV plug(angle) to
9.5mm TV jack,
3C2V



YF42227

9.5mm TV plug to 9.5mm TV jack,
O.D.:6mm



YF42233

9.5mm TV plug to
9.5mm TV jack(angle),
3C2V



YF42228

9.5mm TV plug to 9.5mm TV jack,
O.D.:6mm



YF42234

9.5mm TV plug to
9.5mm TV jack
3C2V



YF42229

9.5mm TV plug(angle) to
9.5mm TV plug(angle),
3C2V



YF42235

9.5mm TV plug to
9.5mm TV jack
W/100Hz magnet
3C2V



YF42230

9.5mm TV plug(angle) to
9.5mm TV jack(angle),
3C2V



YF42236

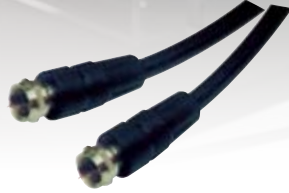
F screw plug to F screw plug,
RG59



COAXIAL CABLE

YF42237

F screw plug to F screw plug,
RG59



YF42243

F plug to F plug,
RG6U cable
W/water proof cover



YF42238

F screw plug to F screw plug
RG59



YF42244

BNC plug to BNC plug
RG59



YF42239

F quick plug to F quick plug,
RG59



YF42245

BNC plug to 9.5mm plug
RG59



YF42240

F quick plug to F quick plug ,
RG59



YF42246

RCA plug to BNC plug
RG59



YF42241

F quick plug to F quick plug angle,
RG59



YF42247

F screw plug to 9.5mm TV plug
RG59



YF42242

F quick plug to F quick plug,
RG59



YF42248

9.5mm plug to RCA plug
RG59



COAXIAL CABLE

YF42249

9.5mm TV plug to
9.5mm TV jack,
with absorbing ferrite gold
O.D.: 5mm



YF42255

3.5mm stereo plug to
3.5mm stereo plug,
O.D.:4.0mm



YF42250

9.5mm TV plug to
9.5mm TV jack
with absorbing ferrite, metal gold
O.D.:4.0mm



YF42256

3.5mm stereo plug to
3.5mm stereo plug,
O.D.:2.6×5.2mm



YF42251

F screw plug to
F screw plug
with absorbing ferrite
O.D.:5mm



YF42257

3.5mm stereo plug to
3.5mm stereo jack,
O.D.:2.6×5.2mm



YF42252

F screw plug to
F screw plug
with absorbing ferrite, gold
O.D.:5mm



YF42258

3.5mm stereo plug to
3.5mm stereo jack,
O.D.:4.5mm



YF42253

F screw plug to
F screw plug
with absorbing ferrite, metal gold
O.D.:5mm



YF42259

3.5mm mono plug to
3.5mm mono plug,
O.D.:4.0mm



YF42254

3.5mm mono plug to
3.5mm mono plug,
O.D.:4.0mm

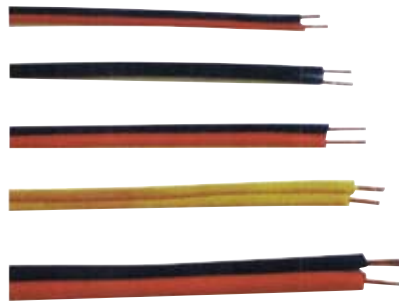
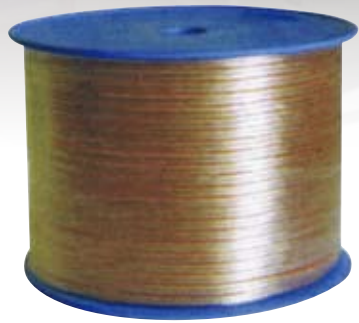


YF42260

3.5mm stereo plug to
3.5mm stereo plug,
O.D.:4.0mm



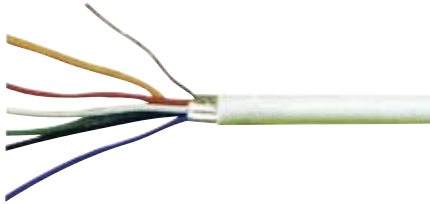
OFC CLEAN SPEAKER WIRES



LEADER TYPE NO	AWG	CONDUCTOR NO./mm	INSULATION THICKNESS	O.D.
			mm	mm
D08-1	8	79/0.22X2C	1.20	5.0X10.0
D08-2	8	175/0.18X2C	1.40	6.0X12.0
D10-1	10	62/0.22X2C	1.20	4.5X9.0
D10-2	10	140/0.16X2C	1.40	5.0X10.0
D12-1	12	80/0.12X2C	0.90	4.8X8.0
D12-2	12	100/0.15X2C	0.90	4.5X9.0
D12-3	12	200/0.12X2C	0.90	5.0X10.0
D12-4	12	105/0.16X2C	0.80	4.5X9.0
D12-5	12	41/0.22X2C	0.90	3.8X7.6
D14-1	14	50/0.12X2C	0.90	3.5X7.0
D14-2	14	80/0.12X2C	0.90	3.5X7.0
D14-3	14	100/0.12X2C	0.90	3.7X7.4
D14-4	14	7X25/0.12X2C	0.90	3.8X7.6
D14-5	14	54/0.16X2C	0.80	3.5X7.0
D14-6	14	42/0.18X2C	0.80	3.5X7.0
D14-7	14	24/0.18X2C	0.80	3.5X7.0
D14-8	17	30/0.17X2C	0.90	3.5X7.0
D16-1	16	30/0.12X2C	0.80	3.0X6.0
D16-2	16	50/0.12X2C	0.80	3.0X6.0
D16-3	16	50/0.15X2C	0.80	3.0X6.0
D16-4	16	24/0.25X2C	0.80	3.0X6.0
D16-5	16	40/0.12X2C	0.80	3.0X6.0
D16-6	16	30/0.16X2C	0.80	3.0X6.0

LEADER TYPE NO	AWG	CONDUCTOR NO./mm	INSULATION THICKNESS	O.D.
			mm	mm
D16-1	16	24/0.15X2C	0.80	3.0X6.0
D18-1	18	16/0.12X2C	0.80	3.2X6.4
D18-2	18	20/0.18X2C	0.80	2.5X5.0
D18-3	18	30/0.12X2C	0.80	2.5X5.0
D18-4	18	30/0.15X2C	0.80	2.5X5.0
D18-5	18	16/0.25X2C	0.80	2.6X5.2
D18-6	18	38/0.15X2C	0.80	2.6X5.2
D18-7	18	16/0.15X2C	0.80	2.6X5.2
D20-1	20	12/0.16X2C	0.65	2.2X4.4
D20-2	20	20/0.15X2C	0.65	2.2X4.4
D20-3	20	20/0.10X2C	0.65	2.2X4.4
D20-4	20	10/0.25X2C	0.65	2.2X4.4
D20-5	20	10/0.12X2C	0.65	2.2X4.4
D20-6	20	30/0.12X2C	0.65	2.2X4.4
D20-7	20	11/0.15X2C	0.50	2.3X4.6
D22-1	22	14/0.15X2C	0.60	2.0X4.0
D22-2	22	10/0.12X2C	0.50	2.6X5.2
D22-3	22	10/0.15X2C	0.50	1.8X3.6
D22-4	22	7/0.25X2C	0.50	1.8X3.6
D22-5	22	7/0.15X2C	0.50	2.0X4.0
D24-1	24	7/0.15X2C	0.45	1.4X2.8
D24-2	24	7/0.20X2C	0.45	1.6X3.2

ALARM CABLE SERIES



APPLICATION

These cables are designed for installation in signaling and alarm systems. They allow the connection of contacts, detectors and sensors, infrared as well as microwave or mixed technology systems, to the switchboard.



PRODUCT DESCRIPTION

Single shielded: AL/polyester foil, coverage >100%
 Double fully shielded: AL/polyester foil & tinned copper braid.

STRUCTURE OF UNSHIELDED 0.22mm² SOFT ALARM CABLE

SERIAL NO.	SECTION	SPECIFICATION	OVERALL DIAMETER φmm	WEIGHT φmm
A-001	2X0.22mm ²	2X7/0.20	3	11
A-002	4X0.22mm ²	4X7/0.20	3.5	18
A-003	6X0.22mm ²	6X7/0.20	4.1	25
A-004	8X0.22mm ²	8X7/0.20	4.5	32
A-005	10X0.22mm ²	10X7/0.20	5.2	39
A-006	12X0.22mm ²	12X7/0.20	5.4	46
A-007	14X0.22mm ²	14X7/0.20	5.8	54
A-008	20X0.22mm ²	20X7/0.20	6.8	76
A-009	30X0.22mm ²	30X7/0.20	8.4	114
A-010	40X0.22mm ²	40X7/0.20	10	148

STRUCTURE OF SINGLE SHIELDED 0.22mm² SOFT ALARM CABLE

SERIAL NO.	SECTION	SPECIFICATION	OVERALL DIAMETER φmm	WEIGHT φmm
A-023	2X0.22mm ²	2X7/0.20	3.1	11.3
A-024	4X0.22mm ²	4X7/0.20	3.6	18.5
A-025	6X0.22mm ²	6X7/0.20	4.2	25.8
A-026	8X0.22mm ²	8X7/0.20	4.6	33.0
A-027	10X0.22mm ²	10X7/0.20	5.3	40.2
A-028	12X0.22mm ²	12X7/0.20	5.5	47.4
A-029	14X0.22mm ²	14X7/0.20	5.9	55.6
A-030	20X0.22mm ²	20X7/0.20	6.9	78.3
A-031	30X0.22mm ²	30X7/0.20	8.5	117.4
A-032	40X0.22mm ²	40X7/0.20	10.1	152.4

USB ACCESSORIES

USB01

USB CABLE AM/AM



USB05

USB CABLE AM/BM WITH GOLD



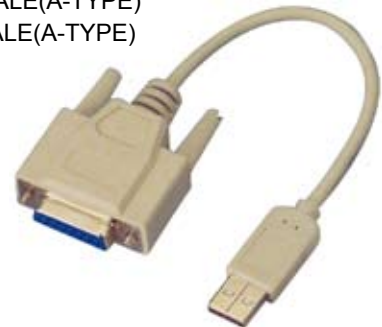
USB02

USB CABLE AM/AF



USB06

DB25M TO USB MALE(A-TYPE)
DB25F TO USB MALE(A-TYPE)



USB03

USB CABLE BM/BM



USB07

USB MALE(A-TYPE) TO FEMALE 8PIN/9PIN MINI DIN



USB04

USB CABLE AM/MINI 5PIN



USB07A

USB MALE(A-TYPE) TO MALE 8PIN/9PIN MINI DIN



HDMI CABLES

YFA0401

HDMI 19P PLUG TO PLUG
SPECS:30# 28# 26# 24# 22#
A:GOLD
B:NICKLE
C:FERRIT CORO
D:CABLE BRAIDING



YFA0416

HDMI 19P PLUG TO PLUG NICKEL-PLATEDMETAL SHELL
SPECS:30# 28# 26# 24# 22#
A:GOLD
B:NICKLE
C:FERRIT CORO
D:CABLE BRAIDING



YFA0405

HDMI 19P PLUG TO PLUG
SPECS:30# 28# 26# 24# 22#
A:GOLD
B:NICKLE
C:FERRIT CORO
D:CABLE BRAIDING



YFA0417

HDMI 19P PLUG TO PLUG NICKEL-PLATEDMETAL SHELL
SPECS:30# 28# 26# 24# 22#
A:GOLD
B:NICKLE
C:FERRIT CORO
D:CABLE BRAIDING



YFA0412

HDMI 19P PLUG TO PLUG
SPECS:30# 28# 26# 24# 22#
A:GOLD
B:NICKLE
C:FERRIT CORO
D:CABLE BRAIDING



YFA0418

HDMI 19P PLUG TO PLUG
NICKEL-PLATEDMETAL SHELL
SPECS:30# 28# 26# 24# 22#
A:GOLD
B:NICKLE
C:FERRIT CORO
D:CABLE BRAIDING



YFA0413

HDMI 19P PLUG TO PLUG
SPECS:30# 28# 26# 24# 22#
A:GOLD
B:NICKLE
C:FERRIT CORO
D:CABLE BRAIDING



YFA0422

HDMI 19P TO DVI DIGITAL CABLE
(W/FERRITE)
A:GOLD
B:NICKLE
C:FERRIT CORO
D:CABLE BRAIDING



YFA0415

HDMI 19P PLUG TO PLUG NICKEL-PLATEDMETAL SHELL
SPECS:30# 28# 26# 24# 22#
A:GOLD
B:NICKLE
C:FERRIT CORO
D:CABLE BRAIDING



YFA0428

HDMI PLUG TO HDMI PLUG 19PIN
30AWG
28AWG

